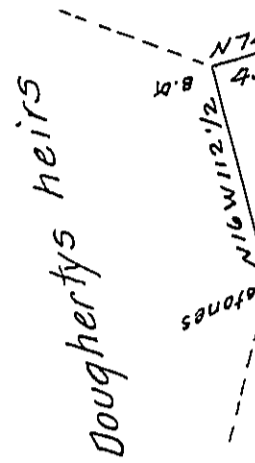


Josiah Hews



N<sup>o</sup> 716  
 Westmoreland County  
 Daniel Duncan  
 301 ac 140 prs.

Fees \$ 6.00

In pursuance  
 of April 1769 c  
 cribed tract  
 and Seventy  
 Cent for road  
 nitas River in  
 Gabriel Hies  
 Surveyor Ge

N.B. The ab  
 ance of a W  
 and Patente

P. Reeve Pat

IN TESTIM

Recd 10 April 1829.